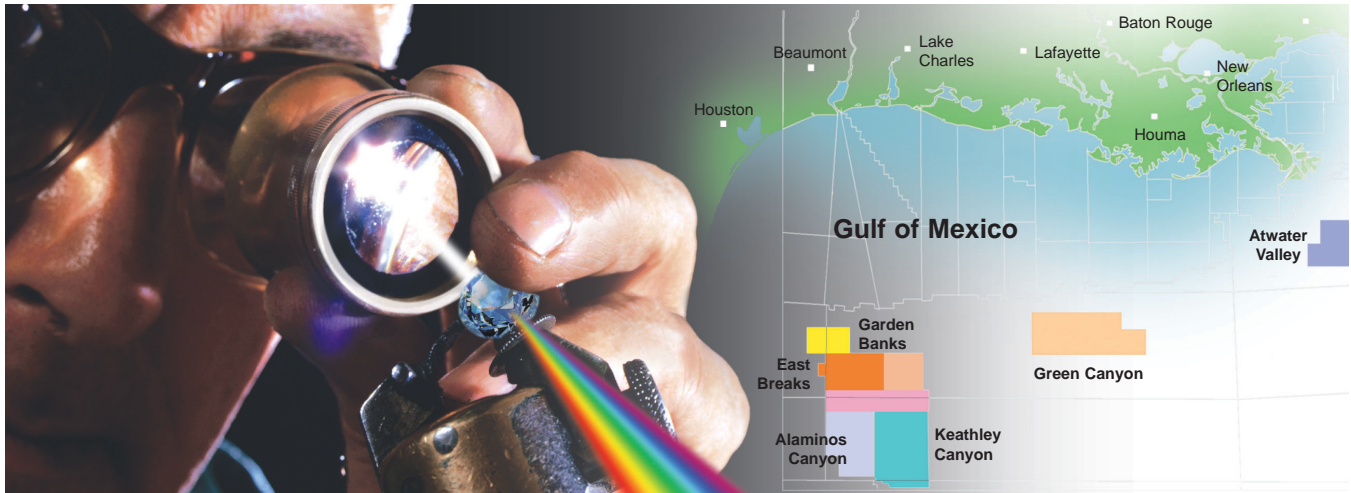


# Reveal the full spectrum of your GOM data with precision. First time, every time.



## **At PGS Data Processing it's Precision First**

PC cluster efficiency and integrated visualization are bringing revolutionary new depth products to the Gulf of Mexico. Before you next purchase data, consider whether it has the precision to meet your exploration needs.

## **No Compromise Depth Models**

Velocity-depth models are the key and there are no shortcuts at PGS – full 3D PSDM iterations all the way to the bottom and rigorous holoSeis™ visualization QC at every stage.

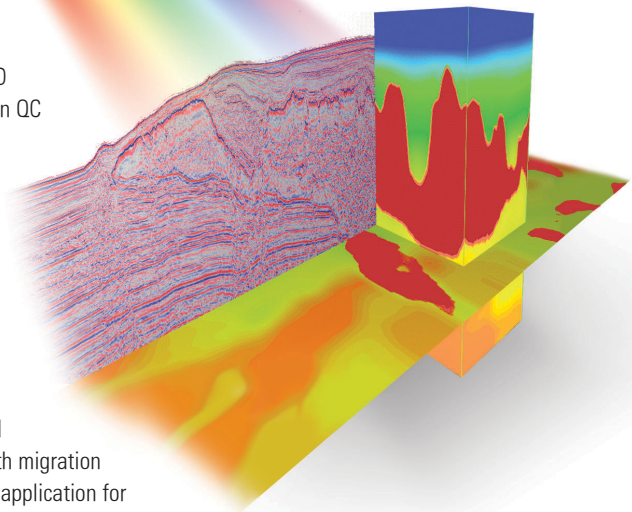
## **Advanced Pre-Stack Depth Migration**

Algorithms crafted in our own research labs ensure that images are the best in class. Anisotropic ray tracing retains critical lithological information. We offer depth migration for multi-component data too!

## **Wave Equation Pre-Stack Depth Migration**

Our new proprietary Wave Equation Pre-Stack Depth Migration technique is available for the most challenging reservoir settings. Developed and deployed exclusively on Linux clusters, this efficient implementation of shot-based depth migration positions recorded seismic data more accurately than ever before. This is the application for your next structurally complex imaging project!

**Ask for your Interactive  
3D Demo at the AAPG!  
(Booth 1518)**



Our depth products are precisely what you need for the Gulf of Mexico. To find out more, call our USA office or contact us at [pdppdq@pgs.com](mailto:pdppdq@pgs.com).

## **PGS GEOPHYSICAL - DATA PROCESSING**

USA

TEL: 1-713-781-4000

UK

TEL: 44-1932-260-002

NORWAY

TEL: 47-67-52-64-00

EGYPT

TEL: 20-2-274-6181

AUSTRALIA

TEL: 61-8-9320-9000

INDONESIA

TEL: 62-21-769-8038

UAE

TEL: 971-2-626-2119

